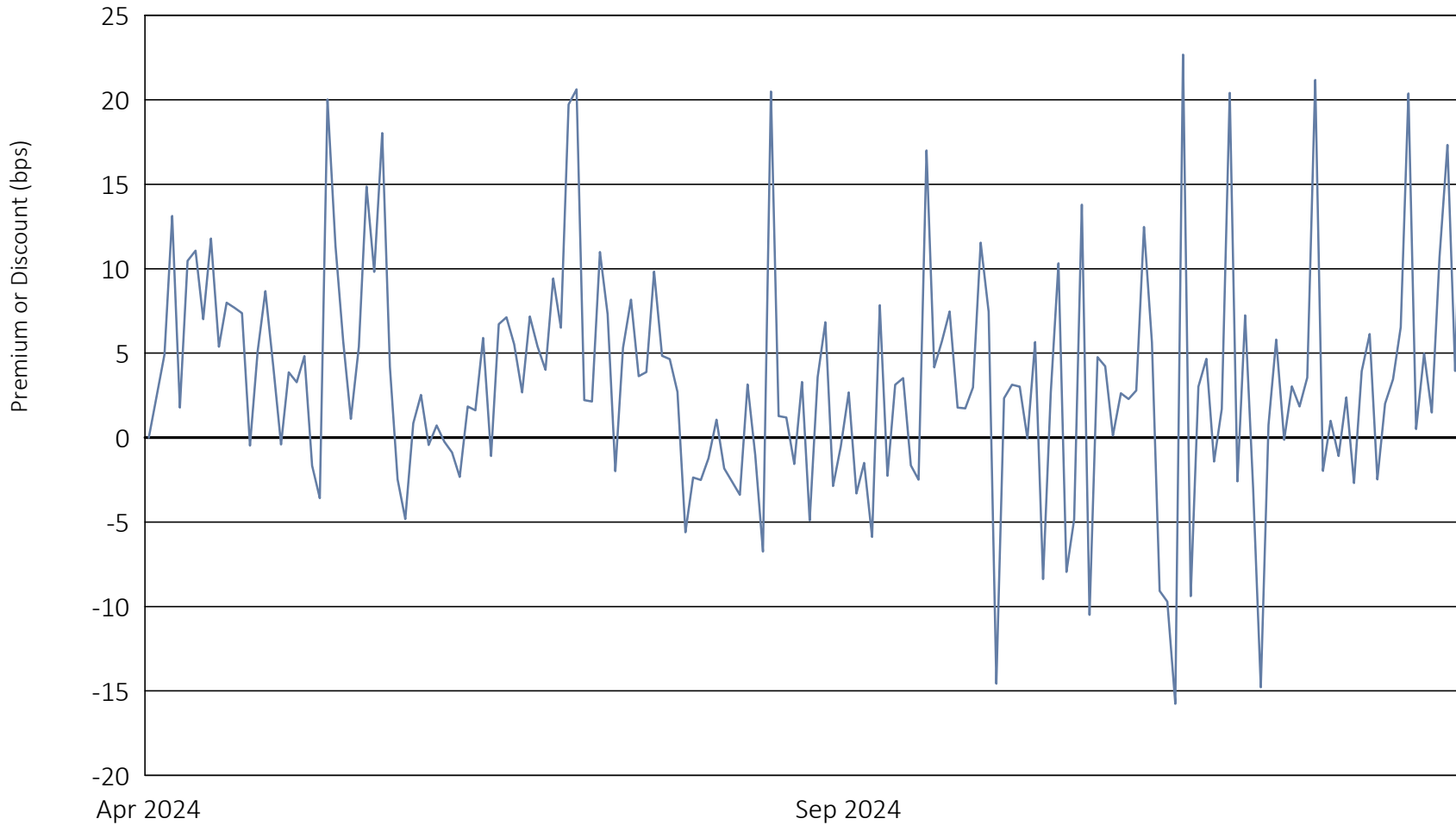


# TrueShares Active Yield ETF

April 30, 2024 to December 31, 2024



Calendar Year 2024 through December 31, 2024

Days traded at premium	119
Days traded at net asset value	1
Days traded at discount	50

The following table and line graph are provided to show the frequency at which the closing price of the Fund was at a premium (above) or discount (below) to the Fund's daily net asset value ("NAV"). The table and line graph represent past performance and cannot be used to predict future results. Shareholders may pay more than NAV when buying Fund shares and receive less than NAV when those shares are sold because shares are bought and sold at current market prices.